

Cbl (G694) polyclonal antibody

Catalog: BS1519

Host: Rabbit

Reactivity: Human, Mouse, Rat

BackGround:

Cbl (also designated the c-Cbl proto-oncogene, E3 ubiquitin-protein ligase CBL, Casitas B-lineage lymphoma proto-oncogene and RING finger protein 55) has been identified as the cellular homolog of the v-Cbl oncogene isolated from an NFS/N mouse that developed a pre-B cell lymphoma following infection with the replication-competent Cas Br-M murine leukemic virus. c-Cbl is expressed at relatively high levels in a wide range of hematopoietic tumor cell lines as well as in normal tissues such as thymus and testis. The c-Cbl gene product has been identified as a cytoplasmic protein with apparent DNA binding and dimerization domains characteristic of transcription factors. A single c-Cbl locus termed CBL2 has been mapped to human chromosome 11q23. This region of chromosome 11 is involved in translocations and deletions in a broad range of leukemias; c-Cbl has been found to be translocated from chromosome 11 in leukemias with either t(4;11) or t(11;14) abnormalities.

Product:

1 mg/ml in Phosphate buffered saline (PBS) with 0.05% sodium azide, approx. pH 7.2.

Molecular Weight:

~ 100, 120kDa

Swiss-Prot:

P22681

Purification&Purity:

The antibody was affinity-purified from rabbit antiserum by affinity-chromatography using epitope-specific immunogen and the purity is > 95% (by SDS-PAGE).

Applications:

WB: 1:500~1:1000

IHC: 1:50~1:200

IF: 1:50~1:200

Storage&Stability:

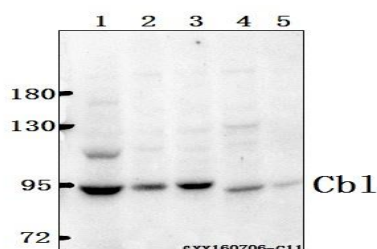
Store at 4 °C short term. Aliquot and store at -20 °C long

term. Avoid freeze-thaw cycles.

Specificity:

CBL (G694) polyclonal antibody detects endogenous levels of CBL protein.

DATA:



Western blot (WB) analysis of Cbl(G694) polyclonal antibody at 1:500 dilution

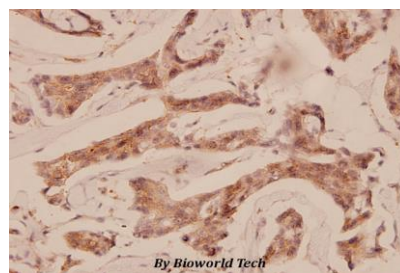
Lane1:786-O whole cell lysate(40ug)

Lane2:SK-OVCAR3 whole cell lysate(40ug)

Lane3:MCF-7 whole cell lysate(40ug)

Lane4:The Testis tissue lysate of Mouse(40ug)

Lane5:The Testis tissue lysate of Rat(40ug)



Immunohistochemistry (IHC) analyzes of Cbl (G694) pAb in paraffin-embedded human breast carcinoma tissue at 1:100.

Note:

For research use only, not for use in diagnostic procedure.

Bioworld Technology, Inc.

Add: 1660 South Highway 100, Suite 500 St. Louis Park, MN 55416, USA.

Email: info@bioworld.com

Tel: 6123263284

Fax: 6122933841

Bioworld technology, co. Ltd.

Add: No 9, weidi road Qixia District Nanjing, 210046, P. R. China.

Email: info@biogot.com

Tel: 0086-025-68037686

Fax: 0086-025-68035151



PRODUCT DATA SHEET

Bioworld Technology, Inc.

Bioworld Technology, Inc.

Add: 1660 South Highway 100, Suite 500 St. Louis Park,
MN 55416, USA.

Email: info@bioworld.com

Tel: 6123263284

Fax: 6122933841

Bioworld technology, co. Ltd.

Add: No 9, weidi road Qixia District Nanjing, 210046,
P. R. China.

Email: info@biogot.com

Tel: 0086-025-68037686

Fax: 0086-025-68035151