

## Ephrin-B1/2 (Q324) polyclonal antibody

Catalog: BS1398

Host: Rabbit

Reactivity: Human, Mouse, Rat

### BackGround:

Ephrin-B1 transduces outside-in signals through C-terminal protein interactions that effect integrin-mediated cell attachment and migration. The distribution of ephrin-B1 in the developing retina suggests that it influences retinal axon mapping along the dorsal-ventral axis and may be involved in intratectal development. The transmembrane ligand ephrin-B2 and its receptor tyrosine kinase EphB4 are specifically expressed on arterial and venous endothelial cells, respectively. Bidirectional signals mediated by both proteins play an important role in vascular development. Ephrin-B2 is essential for the normal morphogenesis of the embryonic vasculature and is angiogenic in tumors. It has been identified as an important target of chemotherapeutic treatments.

### Product:

1 mg/ml in Phosphate buffered saline (PBS) with 0.05% sodium azide, approx. pH 7.2.

### Molecular Weight:

~ 38, 45, 59 kDa

### Swiss-Prot:

P98172/P52799

### Purification&Purity:

The antibody was affinity-purified from rabbit antiserum by affinity-chromatography using epitope-specific immunogen and the purity is > 95% (by SDS-PAGE).

### Applications:

IHC: 1:50~1:200

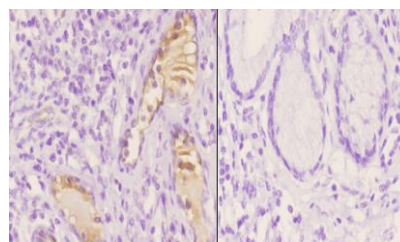
### Storage&Stability:

Store at 4 °C short term. Aliquot and store at -20 °C long term. Avoid freeze-thaw cycles.

### Specificity:

Ephrin-B (Q324) polyclonal antibody detects endogenous levels of Ephrin-B protein.

### DATA:



BS1398  
Lot C736131

Immunohistochemistry (IHC) analyzes of Ephrin-B1/2 (Q324) pAb in paraffin-embedded human esophageal carcinoma tissue at 1:50, showing cytoplasmic staining. Negative control (the right) Using PBS instead of primary antibody, secondary antibody is Goat Anti-Rabbit IgG-biotin followed by avidin-peroxidase.

### Note:

For research use only, not for use in diagnostic procedure.

### Bioworld Technology, Inc.

Add: 1660 South Highway 100, Suite 500 St. Louis Park, MN 55416, USA.

Email: [info@bioworld.com](mailto:info@bioworld.com)

Tel: 6123263284

Fax: 6122933841

### Bioworld technology, co. Ltd.

Add: No 9, weidi road Qixia District Nanjing, 210046, P. R. China.

Email: [info@biogot.com](mailto:info@biogot.com)

Tel: 0086-025-68037686

Fax: 0086-025-68035151