

E2F-1 (D426) polyclonal antibody

Catalog: BS1397

Host: Rabbit

Reactivity: Human, Mouse, Rat

BackGround:

The E2F transcription factors are essential for regulation of the cell cycle. Physiological E2F is a heterodimer composed of an E2F subunit together with a DP subunit. Six members of the E2F family have been identified, and each E2F subunit has a DNA binding and a dimerization domain. E2F-1 to -5 activate transcription. E2F-1 to -3 bind pRb, and E2F-4 and -5 bind p107 or p130, and these interactions are under cell cycle control. E2F-1 has oncogenic properties in vivo and in vitro. E2F-1 can induce apoptosis through p53-dependent and -independent mechanisms. E2F-1 is stress-responsive, and is regulated by a PI3-kinase-like kinase family such as the ATM/ATR kinases.

Product:

1 mg/ml in Phosphate buffered saline (PBS) with 0.05% sodium azide, approx. pH 7.2.

Molecular Weight:

~ 47 kDa

Swiss-Prot:

Q01094

Purification&Purity:

The antibody was affinity-purified from rabbit antiserum by affinity-chromatography using epitope-specific immunogen and the purity is > 95% (by SDS-PAGE).

Applications:

IHC: 1:50~1:200

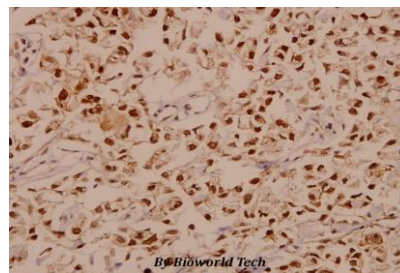
Storage&Stability:

Store at 4 °C short term. Aliquot and store at -20 °C long term. Avoid freeze-thaw cycles.

Specificity:

E2F1 (D426) polyclonal antibody detects endogenous levels of E2F1 protein.

DATA:



Immunohistochemistry (IHC) analyzes of E2F-1 (D426) pAb in paraffin-embedded human breast carcinoma tissue at 1:50.

Note:

For research use only, not for use in diagnostic procedure.

Bioworld Technology, Inc.

Add: 1660 South Highway 100, Suite 500 St. Louis Park, MN 55416, USA.

Email: info@bioworld.com

Tel: 6123263284

Fax: 6122933841

Bioworld technology, co. Ltd.

Add: No 9, weidi road Qixia District Nanjing, 210046, P. R. China.

Email: info@biogot.com

Tel: 0086-025-68037686

Fax: 0086-025-68035151