

## Synaptophysin (L128) polyclonal antibody

Catalog: BS1345

Host: Rabbit

Reactivity: Human, Mouse, Rat

### BackGround:

Synaptic vesicles participate in a cycle of fusion with the plasma membrane and reformation by endocytosis. Synaptic vesicle protein synaptophysin (SYP) is targeted to early endosomes in transfected fibroblasts and in neuroendocrine cells. SYP is an N-glycosylated integral membrane protein found in neurons and endocrine cells that associates into hexamers to form a large conductance channel. SYP contains four transmembrane domains and may function as a gap junction-like channel. Membrane cholesterol specifically interacts with SYP to play a role in vesicle formation. Synaptobrevin (VAMP) also binds to SYP and the resultant complex is upregulated during neuronal development, but is absent in exocytosis fusion complex. Thus, the synaptophysin-synaptobrevin complex is not essential for exocytosis, but rather provides a pool of synaptobrevin for exocytosis.

### Product:

1 mg/ml in Phosphate buffered saline (PBS) with 0.05% sodium azide, approx. pH 7.2.

### Molecular Weight:

~ 38 kDa

### Swiss-Prot:

P08247

### Purification&Purity:

The antibody was affinity-purified from rabbit antiserum by affinity-chromatography using epitope-specific immunogen and the purity is > 95% (by SDS-PAGE).

### Applications:

WB: 1:500~1:1000

IHC: 1:50~1:200

### Storage&Stability:

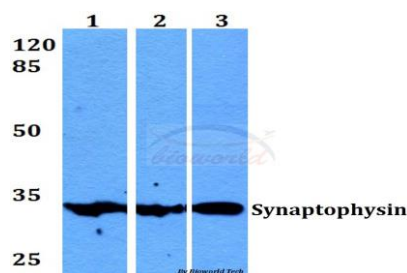
Store at 4 °C short term. Aliquot and store at -20 °C long

term. Avoid freeze-thaw cycles.

### Specificity:

Synaptophysin (L128) polyclonal antibody detects endogenous levels of Synaptophysin protein.

### DATA:

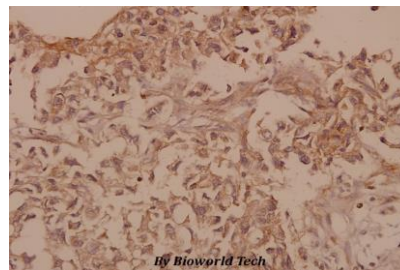


Western blot (WB) analysis of Synaptophysin (L128) polyclonal antibody at 1:500 dilution

Lane1:HEK293T whole cell lysate

Lane2:Raw264.7 whole cell lysate

Lane3:H9C2 whole cell lysate



Immunohistochemistry (IHC) analyzes of Synaptophysin (L128) pAb in paraffin-embedded human breast carcinoma tissue at 1:50.

### Note:

For research use only, not for use in diagnostic procedure.

### Bioworld Technology, Inc.

Add: 1660 South Highway 100, Suite 500 St. Louis Park, MN 55416, USA.

Email: [info@bioworld.com](mailto:info@bioworld.com)

Tel: 6123263284

Fax: 6122933841

### Bioworld technology, co. Ltd.

Add: No 9, weidi road Qixia District Nanjing, 210046, P. R. China.

Email: [info@biogol.com](mailto:info@biogol.com)

Tel: 0086-025-68037686

Fax: 0086-025-68035151