

## PML (P39) polyclonal antibody

Catalog: BS1296

Host: Rabbit

Reactivity: Human

### BackGround:

The PML protein is a zinc finger transcription factor expressed as three major transcription products due to alternative splicing. The gene encoding human PML maps to chromosome 15q22. The t(15;17) (q22;q11.2-q12) chromosomal trans-location of the retinoic acid receptor  $\alpha$  (RAR $\alpha$ ) gene occurs in virtually all cases of acute promyelocytic leukemia and results in the expression of a PML/RAR $\alpha$  chimeric protein. Myeloid precursor cells expressing the PML/ RAR $\alpha$  chimera fail to differentiate and exhibit an increased growth rate consequent to diminished apoptosis. PML/RAR $\alpha$  transforms myeloid precursors by recruiting the nuclear co-repressor (N-CoR)-histone deacetylase complex that is essential to retinoic acid-dependent myeloid differentiation. PML/ RAR $\alpha$  also recruits DNA methyltransferases in order to induce gene hypermethylation and silencing, which ultimately facilitates leukemogenesis.

### Product:

1 mg/ml in Phosphate buffered saline (PBS) with 0.05% sodium azide, approx. pH 7.2.

### Molecular Weight:

~ 98 kDa

### Swiss-Prot:

P29590

### Purification&Purity:

The antibody was affinity-purified from rabbit antiserum by affinity-chromatography using epitope-specific immunogen and the purity is > 95% (by SDS-PAGE).

### Applications:

WB: 1:500~1:1000

IHC: 1:50~1:200

IF: 1:50~1:200

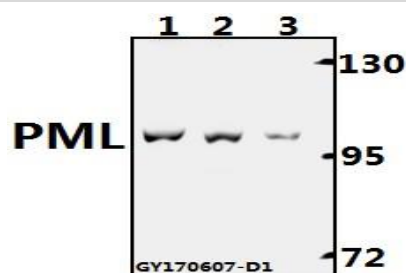
### Storage&Stability:

Store at 4 °C short term. Aliquot and store at -20 °C long term. Avoid freeze-thaw cycles.

### Specificity:

PML (P39) polyclonal antibody detects endogenous levels of PML protein.

### DATA:

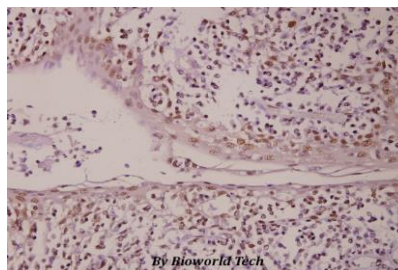


Western blot (WB) analysis of PML (P39) pAb at 1:500 dilution

Lane1:L02 whole cell lysate(40ug)

Lane2:HEK293T whole cell lysate(40ug)

Lane3:A549 whole cell lysate(40ug)



Immunohistochemistry (IHC) analyzes of PML (P39) pAb in paraffin-embedded human tonsil carcinoma tissue at 1:50.

### Note:

For research use only, not for use in diagnostic procedure.

### Bioworld Technology, Inc.

Add: 1660 South Highway 100, Suite 500 St. Louis Park, MN 55416, USA.

Email: [info@bioworld.com](mailto:info@bioworld.com)

Tel: 6123263284

Fax: 6122933841

### Bioworld technology, co. Ltd.

Add: No 9, weidi road Qixia District Nanjing, 210046, P. R. China.

Email: [info@biogot.com](mailto:info@biogot.com)

Tel: 0086-025-68037686

Fax: 0086-025-68035151