

IKB-ε (D17) polyclonal antibody

Catalog: BS1191

Host: Rabbit

Reactivity: Human, Mouse, Rat

BackGround:

IκB-ε (I-kappa-B-epsilon), also known as NFKBIE (NFκB inhibitor epsilon) or IKBE, is a 500 amino acid protein that belongs to the NFκB inhibitor family. Localizing to the cytoplasm, IκB-ε is highly expressed in spleen, testis and lung, with lower levels of expression found in kidney, pancreas, heart, placenta, brain, granulocytes and macrophages. IκB-ε inhibits c-Rel and NFκB subunits p50, p52 and p65 by forming a complex with them in the cytoplasm, preventing them from activating genes in the nucleus. IκB-ε undergoes serine phosphorylation, resulting in the protein being marked for destruction via the ubiquitination pathway.

Product:

1 mg/ml in Phosphate buffered saline (PBS) with 15 mM sodium azide, approx. pH 7.2.

Molecular Weight:

~ 45 kDa

Swiss-Prot:

O00221

Purification&Purity:

The antibody was affinity-purified from rabbit antiserum by affinity-chromatography using epitope-specific immunogen and the purity is > 95% (by SDS-PAGE).

Applications:

WB: 1:500~1:1000

IHC: 1:50~1:200

IF: 1:50~1:200

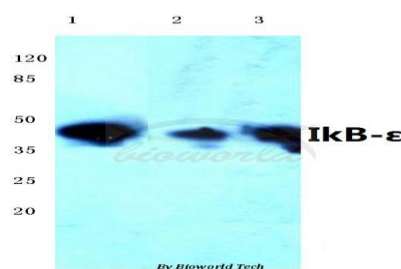
Storage&Stability:

Store at 4 °C short term. Aliquot and store at -20 °C long term. Avoid freeze-thaw cycles.

Specificity:

IκB-ε (D17) polyclonal antibody detects endogenous levels of IκB-ε protein.

DATA:

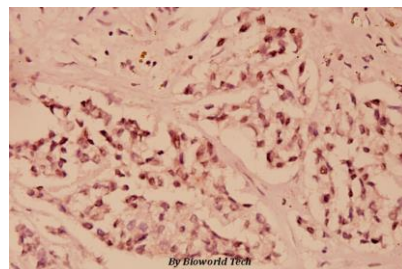


Western blot (WB) analysis of IκB-ε (D17) polyclonal antibody at 1:500 dilution

Lane1:HEK293T cell lysate

Lane2:NIH-3T3 cell lysate

Lane3:PC12 cell lysate



Immunohistochemistry (IHC) analyzes of IκB-ε (D17) pAb in paraffin-embedded human breast carcinoma tissue at 1:100.

Note:

For research use only, not for use in diagnostic procedure.

Bioworld Technology, Inc.

Add: 1660 South Highway 100, Suite 500 St. Louis Park, MN 55416, USA.

Email: info@bioworld.com

Tel: 6123263284

Fax: 6122933841

Bioworld technology, co. Ltd.

Add: No 9, weidi road Qixia District Nanjing, 210046, P. R. China.

Email: info@biogot.com

Tel: 0086-025-68037686

Fax: 0086-025-68035151