

ErbB2/HER2 (P1215) polyclonal antibody

Catalog: BS1170

Host: Rabbit

Reactivity: Human, Mouse, Rat

BackGround:

The EGF receptor family comprises several related receptor tyrosine kinases that are frequently overexpressed in a variety of carcinomas. Members of this receptor family include EGFR (HER1), Neu (ErbB-2, HER2), ErbB-3 (HER3), and ErbB-4 (HER4), which form either homodimers or heterodimers upon ligand binding. Neu, a glycoprotein, undergoes transactivation upon hetero-dimerization with other EGF receptor family members. Neu heterodimerization with ErbB-3 recruits hergulin, which induces phosphoinositide (PI) 3-kinase activation. Activation of Neu potentiates tumor cell motility and protease secretion and invasion, and also modulates cell cycle checkpoint function, DNA repair and apoptotic responses.

Product:

1 mg/ml in Phosphate buffered saline (PBS) with 0.05% sodium azide, approx. pH 7.2.

Molecular Weight:

~ 138,185 kDa

Swiss-Prot:

P04626

Purification&Purity:

The antibody was affinity-purified from rabbit antiserum by affinity-chromatography using epitope-specific immunogen and the purity is > 95% (by SDS-PAGE).

Applications:

WB: 1:500~1:1000

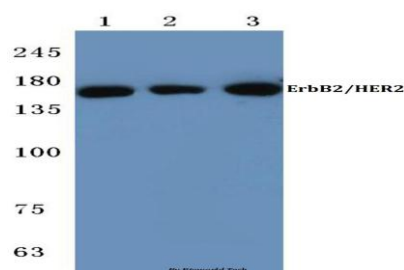
Storage&Stability:

Store at 4 °C short term. Aliquot and store at -20 °C long term. Avoid freeze-thaw cycles.

Specificity:

ErbB2/HER2 (P1215) pAb detects endogenous levels of ErbB2/HER2 protein.

DATA:



Western blot (WB) analysis of ErbB2/HER2 (P1215) pAb at 1:500 dilution

Lane1:HepG2 cell lysate

Lane2:Mouse heart tissue lysate

Lane3:Rat heart tissue lysate

Note:

For research use only, not for use in diagnostic procedure.

Bioworld Technology, Inc.

Add: 1660 South Highway 100, Suite 500 St. Louis Park, MN 55416, USA.

Email: info@bioworld.com

Tel: 6123263284

Fax: 6122933841

Bioworld technology, co. Ltd.

Add: No 9, weidi road Qixia District Nanjing, 210046, P. R. China.

Email: info@biogol.com

Tel: 0086-025-68037686

Fax: 0086-025-68035151