

## GRP78 (P641) polyclonal antibody

Catalog: BS1154

Host: Rabbit

Reactivity: Human, Mouse, Rat

### BackGround:

The HSP 70 family comprises four highly conserved proteins, HSP 70, HSC 70, GRP 75 and GRP 78, which serve a variety of roles. They act as molecular chaperones facilitating the assembly of multi-protein complexes, participate in the translocation of polypeptides across cell membranes and to the nucleus, and aid in the proper folding of nascent polypeptide chains. HSC 70, GRP 75 and GRP 78 are constitutively expressed in primate cells. HSP 70 expression is strongly induced in response to heat stress. HSP 70 and HSC 70, which are found in both the cytosol and nucleus of mammalian cells, play key roles in the cytosolic endoplasmic reticulum and mitochondrial import machinery.

### Product:

1 mg/ml in Phosphate buffered saline (PBS) with 0.05% sodium azide, approx. pH 7.2.

### Molecular Weight:

~ 78 kDa

### Swiss-Prot:

P11021

### Purification&Purity:

The antibody was affinity-purified from rabbit antiserum by affinity-chromatography using epitope-specific immunogen and the purity is > 95% (by SDS-PAGE).

### Applications:

WB: 1:500~1:1000

IHC/IF: 1:50~1:200

IP: 1:10~1:100

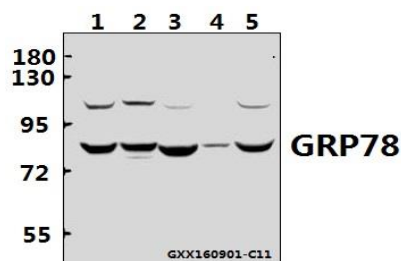
### Storage&Stability:

Store at 4 °C short term. Aliquot and store at -20 °C long term. Avoid freeze-thaw cycles.

### Specificity:

GRP78 (P641) polyclonal antibody detects endogenous levels of GRP78 protein.

### DATA:



Western blot (WB) analysis of GRP78 (P641) polyclonal antibody at 1:500 dilution

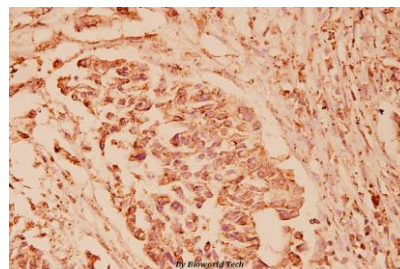
Lane1:L02 whole cell lysate(40ug)

Lane2:HCT116 whole cell lysate(40ug)Lane3:HCT116 whole cell lysate(40ug)

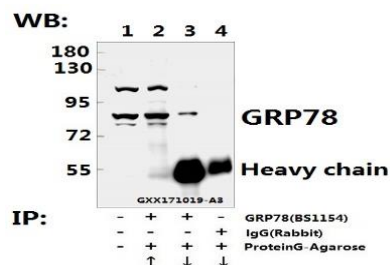
Lane3:AML-12 whole cell lysate(40ug)

Lane4:PC12 whole cell lysate(40ug)Lane3:HCT116 whole cell lysate(40ug)

Lane5:HEK293T whole cell lysate(40ug)



Immunohistochemistry (IHC) analyzes of GRP78 (P641) pAb in paraffin-embedded human breast carcinoma tissue at 1:100.



Immunoprecipitation of L02 whole cell lysate using GRP78 (P641) pAb (Sepharose Bead Conjugate) #BD0047 (lane 2 and lane 3) and Non-specific IgG Control (Sepharose Bead Conjugate)#BD0047 (lane 4) .Lane

### Bioworld Technology, Inc.

Add: 1660 South Highway 100, Suite 500 St. Louis Park, MN 55416, USA.

Email: [info@bioworld.com](mailto:info@bioworld.com)

Tel: 6123263284

Fax: 6122933841

### Bioworld technology, co. Ltd.

Add: No 9, weidi road Qixia District Nanjing, 210046, P. R. China.

Email: [info@biogot.com](mailto:info@biogot.com)

Tel: 0086-025-68037686

Fax: 0086-025-68035151



## PRODUCT DATA SHEET

Bioworld Technology, Inc.

1 is 20% input. The western blot was probed using GRP78 (P641) pAb  
#BS11542. “↑” (supernatant) ; “↓” (deposition)

**Note:**

For research use only, not for use in diagnostic procedure.

---

**Bioworld Technology, Inc.**

Add: 1660 South Highway 100, Suite 500 St. Louis Park,  
MN 55416, USA.

Email: [info@bioworld.com](mailto:info@bioworld.com)

Tel: 6123263284

Fax: 6122933841

**Bioworld technology, co. Ltd.**

Add: No 9, weidi road Qixia District Nanjing, 210046,  
P. R. China.

Email: [info@biogot.com](mailto:info@biogot.com)

Tel: 0086-025-68037686

Fax: 0086-025-68035151