

## FGFR1 OP (N371) polyclonal antibody

Catalog: BS1123

Host: Rabbit

Reactivity: Human, Mouse, Rat

### BackGround:

FOP, also known as FGFR1OP (FGFR1 oncogene partner), is a 399 amino acid protein that localizes to the centrosome and contains one LisH domain. Expressed ubiquitously with highest expression in kidney, heart, muscle, colon, liver, testis and pancreas, FOP functions as a homodimer that interacts with EB1 and CEP350 and is essential for anchoring microtubules to centrosomes. Chromosomal aberrations that involve the FOP gene are associated with the pathogenesis of stem cell myeloproliferative disorder (MPD), a condition that is characterized by eosinophilia and myeloid hyperplasia and ultimately leads to acute myeloid leukemia. FOP is expressed as multiple isoforms that are produced by alternative splicing events.

### Product:

1 mg/ml in Phosphate buffered saline (PBS) with 15 mM sodium azide, approx. pH 7.2.

### Molecular Weight:

~ 43, 92 kDa

### Swiss-Prot:

O95684

### Purification&Purity:

The antibody was affinity-purified from rabbit antiserum by affinity-chromatography using epitope-specific immunogen and the purity is > 96% (by SDS-PAGE).

### Applications:

IHC: 1:50~1:200

IF: 1:50~1:200

### Storage&Stability:

Store at 4 °C short term. Aliquot and store at -20 °C long term.

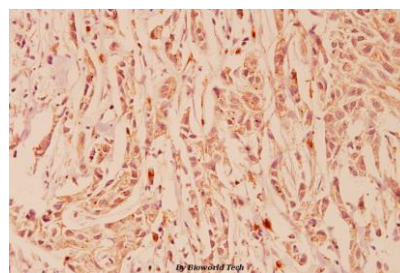
Avoid freeze-thaw cycles.

### Specificity:

FGFR1OP (N371) polyclonal antibody detects endogenous levels of

FGFR1OP protein.

### DATA:



Immunohistochemistry (IHC) analyzes of FGFR1 OP (N371) pAb in paraffin-embedded human breast carcinoma tissue at 1:100.

### Note:

For research use only, not for use in diagnostic procedure.

### Bioworld Technology, Inc.

Add: 1660 South Highway 100, Suite 500 St. Louis Park, MN 55416, USA.

Email: [info@bioworld.com](mailto:info@bioworld.com)

Tel: 6123263284

Fax: 6122933841

### Bioworld technology, co. Ltd.

Add: No 9, weidi road Qixia District Nanjing, 210046, P. R. China.

Email: [info@biogot.com](mailto:info@biogot.com)

Tel: 0086-025-68037686

Fax: 0086-025-68035151