

## ERCC1 (V171) polyclonal antibody

Catalog: BS1111

Host: Rabbit

Reactivity: Human, Mouse, Rat

### BackGround:

Xeroderma pigmentosum (XP) is an autosomal recessive disorder characterized by a genetic predisposition to sun-light-induced skin cancer; it is commonly due to deficiencies in DNA repair enzymes. The most frequent mutations are found in the XP genes from group A through G and group V, which encode for nucleotide excision repair proteins. XPF, which is also designated ERCC4 or ERCC11, associates directly with the excision repair cross-complementing 1 (ERCC1) factor. ERCC1, a functional homolog of Rad10 in *S. cerevisiae*, is a component of a structure-specific endonuclease that is responsible for 5' incisions during DNA repair. The ERCC1-XPF endonuclease preferentially cleaves one strand of DNA between duplex and single-stranded regions near borders of the stem-loop structure and, thereby, contributes to the initial steps of the nucleotide excision repair process.

### Product:

1 mg/ml in Phosphate buffered saline (PBS) with 0.05% sodium azide, approx. pH 7.2.

### Molecular Weight:

~ 36 kDa

### Swiss-Prot:

P07992

### Purification&Purity:

The antibody was affinity-purified from rabbit antiserum by affinity-chromatography using epitope-specific immunogen and the purity is > 95% (by SDS-PAGE).

### Applications:

WB: 1:500~1:1000

IHC: 1:50~1:200

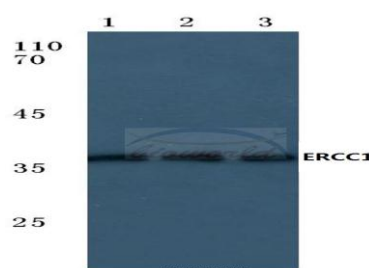
### Storage&Stability:

Store at 4 °C short term. Aliquot and store at -20 °C long term. Avoid freeze-thaw cycles.

### Specificity:

ERCC1 (V171) pAb detects endogenous levels of ERCC1 protein.

### DATA:

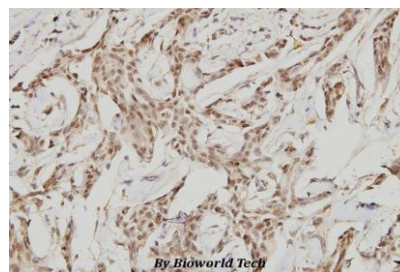


Western blot (WB) analysis of ERCC1 (V171) pAb at 1:500 dilution

Lane1:MCF-7 cell lysate

Lane2:Mouse liver tissue lysate

Lane3:Rat kidney tissue lysate



Immunohistochemistry (IHC) analyzes of ERCC1 (V171) pAb in paraffin-embedded human breast carcinoma tissue at 1:100.

### Note:

For research use only, not for use in diagnostic procedure.

### Bioworld Technology, Inc.

Add: 1660 South Highway 100, Suite 500 St. Louis Park, MN 55416, USA.

Email: [info@bioworld.com](mailto:info@bioworld.com)

Tel: 6123263284

Fax: 6122933841

### Bioworld technology, co. Ltd.

Add: No 9, weidi road Qixia District Nanjing, 210046, P. R. China.

Email: [info@biogot.com](mailto:info@biogot.com)

Tel: 0086-025-68037686

Fax: 0086-025-68035151