

## EEF2 (A50) polyclonal antibody

Catalog: BS1099

Host: Rabbit

Reactivity: Human, Mouse, Rat

### BackGround:

Two elongation factors (EF) EF-Tu and EF-2 participate in the elongation phase during protein biosynthesis on the ribosome and their functional cycles depend on GTP binding and its hydrolysis. EF-Tu (also designated mitochondrial precursor p43) and EF-2 are multidomain GTPases with essential functions in translation, and they both bind to the same site on the ribosome where their low intrinsic GTPase activities are strongly stimulated. EF-Tu plays a central role in the fast and accurate delivery of aminoacyl-tRNAs to the translating ribosome. In addition, EF-Tu protects the aminoester bond against hydrolysis until a correct match between the codon on mRNA and the anticodon on tRNA can be achieved. EF-2 supports the translocation of tRNAs and of mRNAs on the ribosome so that a new codon can be exposed for decoding.

### Product:

1 mg/ml in Phosphate buffered saline (PBS) with 0.05% sodium azide, approx. pH 7.2.

### Molecular Weight:

~ 95 kDa

### Swiss-Prot:

P13639

### Purification&Purity:

The antibody was affinity-purified from rabbit antiserum by affinity-chromatography using epitope-specific immunogen and the purity is > 95% (by SDS-PAGE).

### Applications:

WB: 1:500~1:1000

IHC: 1:50~1:200

IF: 1:50~1:200

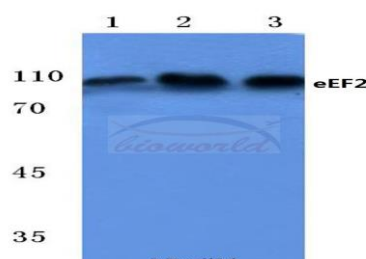
### Storage&Stability:

Store at 4 °C short term. Aliquot and store at -20 °C long term. Avoid freeze-thaw cycles.

### Specificity:

eEF2 (A50) polyclonal antibody detects endogenous levels of eEF2 protein.

### DATA:

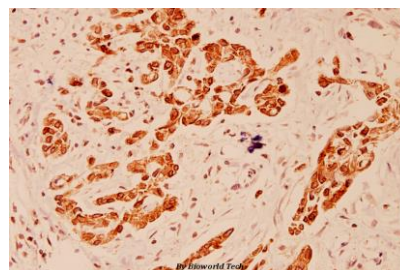


Western blot (WB) analysis of eEF2 (A50) polyclonal antibody at 1:500 dilution

Lane1:HepG2 cell lysate

Lane2:Mouse kidney tissue lysate

Lane3:Rat kidney tissue lysate



Immunohistochemistry (IHC) analyzes of eEF2 (A50) pAb in paraffin-embedded human breast carcinoma tissue at 1:100.

### Note:

For research use only, not for use in diagnostic procedure.

### Bioworld Technology, Inc.

Add: 1660 South Highway 100, Suite 500 St. Louis Park, MN 55416, USA.

Email: [info@bioworld.com](mailto:info@bioworld.com)

Tel: 6123263284

Fax: 6122933841

### Bioworld technology, co. Ltd.

Add: No 9, weidi road Qixia District Nanjing, 210046, P. R. China.

Email: [info@biogot.com](mailto:info@biogot.com)

Tel: 0086-025-68037686

Fax: 0086-025-68035151