

## E-Cadherin (R868) polyclonal antibody

Catalog: BS1098

Host: Rabbit

Reactivity: Human, Mouse, Rat

### BackGround:

Cadherins are members of a multigene family of single chain glycoprotein receptors mediating calcium dependent cell-cell adhesion. They play an important role in the growth and development of cells via the mechanisms of control of tissue architecture and the maintenance of tissue integrity. Cadherins are expressed in a tissue specific manner and are required for assembly of cells into solid tissue. Individual cadherin molecules are known to co-operate with each other to form a linear cell adhesion zipper. In adhesion junctions cadherins are bound to beta and gamma catenins which in turn bind to alpha catenin, an actin binding protein. Cadherins play an important part in tumor invasion and metastasis.

### Product:

1 mg/ml in Phosphate buffered saline (PBS) with 0.05% sodium azide, approx. pH 7.2.

### Molecular Weight:

~ 98, 130 kDa

### Swiss-Prot:

P12830

### Purification&Purity:

The antibody was affinity-purified from rabbit antiserum by affinity-chromatography using epitope-specific immunogen and the purity is > 95% (by SDS-PAGE).

### Applications:

WB: 1:500~1:1000

IHC/IF: 1:50~1:200

IP: 1:50~1:200

### Storage&Stability:

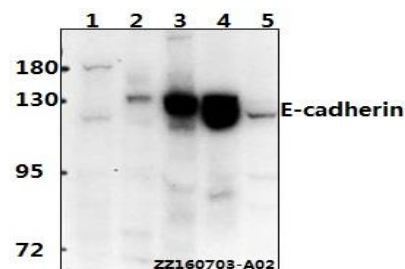
Store at 4 °C short term. Aliquot and store at -20 °C long term. Avoid freeze-thaw cycles.

### Specificity:

E-cadherin (R868) polyclonal antibody detects endoge-

nous levels of E-cadherin protein.

### DATA:



Western blot (WB) analysis of E-cadherin (R868) polyclonal antibody at 1:500 dilution

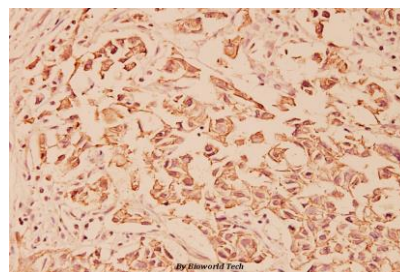
Lane1:HCT116 whole cell lysate(40ug)

Lane2:AML-12 whole cell lysate(40ug)

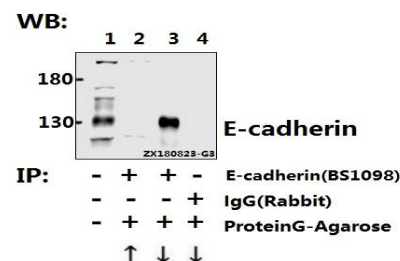
Lane3:PC12 whole cell lysate(40ug)

Lane4:L02 whole cell lysate(40ug)

Lane5:HEK293T whole cell lysate(40ug)



Immunohistochemistry (IHC) analyzes of E-Cadherin (R868) pAb in paraffin-embedded human breast carcinoma tissue at 1:100.



Immunoprecipitation of HepG2 cell lysate using E-cadherin (R868) pAb (Sephacose Bead Conjugate) #BD0048(lane 2 and lane 3) and Nonspecific IgG Control (Sephacose Bead Conjugate) #BD0048 (lane 4) .Lane

### Bioworld Technology, Inc.

Add: 1660 South Highway 100, Suite 500 St. Louis Park, MN 55416, USA.

Email: [info@bioworld.com](mailto:info@bioworld.com)

Tel: 6123263284

Fax: 6122933841

### Bioworld technology, co. Ltd.

Add: No 9, weidi road Qixia District Nanjing, 210046, P. R. China.

Email: [info@biogol.com](mailto:info@biogol.com)

Tel: 0086-025-68037686

Fax: 0086-025-68035151



## PRODUCT DATA SHEET

Bioworld Technology, Inc.

1 is 30% input. The western blot was probed using E-cadherin (R868)

#BS1098. “↑” (supernatant) ; “↓” (deposition)

### Note:

For research use only, not for use in diagnostic procedure.

---

#### Bioworld Technology, Inc.

Add: 1660 South Highway 100, Suite 500 St. Louis Park,  
MN 55416, USA.

Email: [info@bioworld.com](mailto:info@bioworld.com)

Tel: 6123263284

Fax: 6122933841

#### Bioworld technology, co. Ltd.

Add: No 9, weidi road Qixia District Nanjing, 210046,  
P. R. China.

Email: [info@biogot.com](mailto:info@biogot.com)

Tel: 0086-025-68037686

Fax: 0086-025-68035151