

## Cyclin E1 (I119) polyclonal antibody

Catalog: BS1085

Host: Rabbit

Reactivity: Human, Mouse

### BackGround:

Cyclins were first identified in invertebrates as proteins that oscillate dramatically through the cell cycle. These proteins have been well conserved through evolution and play a critical role in regulation of cell division. cyclin E, along with the three cyclin D proteins and cyclin C, has been shown to represent a putative G1 cyclin on the basis of its cyclic pattern of mRNA expression, with maximal levels being detected near the G1/S boundary. cyclin E has been found to be associated with the transcription factor E2F in a temporally regulated manner.

### Product:

1 mg/ml in Phosphate buffered saline (PBS) with 0.05% sodium azide, approx. pH 7.2.

### Molecular Weight:

~ 49 kDa

### Swiss-Prot:

P24864

### Purification&Purity:

The antibody was affinity-purified from rabbit antiserum by affinity-chromatography using epitope-specific immunogen and the purity is > 95% (by SDS-PAGE).

### Applications:

WB: 1:500~1:1000

IHC: 1:50~1:200

IF: 1:50~1:200

### Storage&Stability:

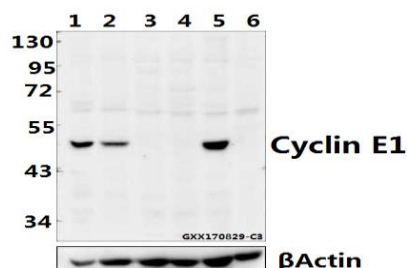
Store at 4 °C short term. Aliquot and store at -20 °C long term. Avoid freeze-thaw cycles.

### Specificity:

Cyclin E1 (I119) polyclonal antibody detects endogenous

levels of Cyclin E1 protein.

### DATA:



Western blot (WB) analysis of Cyclin E1 (I119) pAb at 1:500 dilution

Lane1:HEK293T whole cell lysate(20ug)

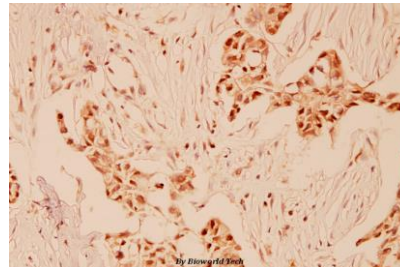
Lane2:SK-OVCAR3 whole cell lysate(20ug)

Lane3:Hela whole cell lysate(20ug)

Lane4:PC12 whole cell lysate(20ug)

Lane5:CT26 whole cell lysate(20ug)

Lane6:The Testis tissue lysate of Rat(20ug)



Immunohistochemistry (IHC) analyzes of Cyclin E1 (I119) pAb in paraffin-embedded human breast carcinoma tissue at 1:100.

### Note:

For research use only, not for use in diagnostic procedure.

### Bioworld Technology, Inc.

Add: 1660 South Highway 100, Suite 500 St. Louis Park, MN 55416, USA.

Email: [info@bioworld.com](mailto:info@bioworld.com)

Tel: 6123263284

Fax: 6122933841

### Bioworld technology, co. Ltd.

Add: No 9, weidi road Qixia District Nanjing, 210046, P. R. China.

Email: [info@biogot.com](mailto:info@biogot.com)

Tel: 0086-025-68037686

Fax: 0086-025-68035151