

## APP/ $\beta$ -Amyloid (E737) polyclonal antibody

Catalog: BS1011

Host: Rabbit

Reactivity: Human, Mouse, Rat

### Background:

Proteolytic cleavage of the Amyloid protein precursor (APP) gives rise to the  $\beta$ -Amyloid and Amyloid A4 proteins, which are present in human platelets. Amyloid deposition is associated with type II diabetes, Down syndrome and a variety of neurological disorders, including Alzheimer's disease. The Amyloid precursor protein (APP) undergoes alternative splicing, resulting in several isoforms. Proteolytic cleavage of APP leads to the formation of the Amyloid  $\beta$ /A4 Amyloid protein. This protein is involved in the formation of neurofibrillary tangles and plaques that characterize the senile plaques of Alzheimer's patients. APLP1 (Amyloid precursor-like protein 1) and APLP2 are structurally similar to APP.

### Product:

1 mg/ml in Phosphate buffered saline (PBS) with 0.05% sodium azide, approx. pH 7.2.

### Molecular Weight:

~ 70 to 140 kDa

### Swiss-Prot:

P05067

### Purification&Purity:

The antibody was affinity-purified from rabbit antiserum by affinity-chromatography using epitope-specific immunogen and the purity is > 95% (by SDS-PAGE).

### Applications:

WB: 1:500~1:1000

IHC: 1:50~1:200

IF: 1:50~1:200

### Storage&Stability:

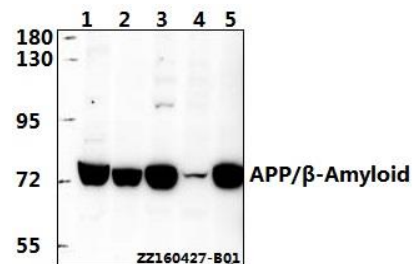
Store at 4 °C short term. Aliquot and store at -20 °C long term. Avoid freeze-thaw cycles.

### Specificity:

APP/ $\beta$ -Amyloid (E737) polyclonal antibody detects en-

dogenous levels of several isoforms of both mature and immature  $\beta$ -amyloid A4 precursor protein, including APP639, APP677, APP695, APP696, APP714, APP733, APP751 and APP752.

### DATA:



Western blot (WB) analysis of APP/ $\beta$ -Amyloid (E737) polyclonal antibody at 1:500 dilution

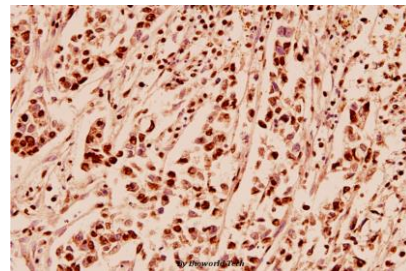
Lane1:L02 whole cell lysate(40ug)

Lane2:HeLa whole cell lysate(40ug)

Lane3:The Brain tissue lysate of Mouse(40ug)

Lane4:The Brain tissue lysate of Rat(40ug)

Lane5:C6 whole cell lysate(40ug)



Immunohistochemistry (IHC) analyzes of APP/ $\beta$ -Amyloid (E737) pAb in paraffin-embedded human breast carcinoma tissue at 1:100.

### Note:

For research use only, not for use in diagnostic procedure.

### Bioworld Technology, Inc.

Add: 1660 South Highway 100, Suite 500 St. Louis Park, MN 55416, USA.

Email: [info@bioworld.com](mailto:info@bioworld.com)

Tel: 6123263284

Fax: 6122933841

### Bioworld technology, co. Ltd.

Add: No 9, weidi road Qixia District Nanjing, 210046, P. R. China.

Email: [info@biogot.com](mailto:info@biogot.com)

Tel: 0086-025-68037686

Fax: 0086-025-68035151