

## Actin- $\alpha 3/\gamma 2$ (E2) polyclonal antibody

Catalog: BS1004

Host: Rabbit

Reactivity: Human, Mouse, Rat

### Background:

All eukaryotic cells express actin, which often constitutes as much as 50% of total cellular protein. Actin filaments can form both stable and labile structures and are crucial components of microvilli and the contractile apparatus of muscle cells. While lower eukaryotes, such as yeast, have only one actin gene, higher eukaryotes have several isoforms encoded by a family of genes. At least six types of actin are present in mammalian tissues and fall into three classes.  $\alpha$  actin expression is limited to various types of muscle, whereas  $\beta$  and  $\gamma$  are the principle constituents of filaments in other tissues. Members of the small GTPase family regulate the organization of the actin cytoskeleton. Rho controls the assembly of actin stress fibers and focal adhesion, Rac regulates actin filament accumulation at the plasma membrane and Cdc42 stimulates formation of filopodia.

### Product:

1 mg/ml in Phosphate buffered saline (PBS) with 0.05% sodium azide, approx. pH 7.2.

### Molecular Weight:

~ 45 kDa

### Swiss-Prot:

P63267

### Purification&Purity:

The antibody was affinity-purified from rabbit antiserum by affinity-chromatography using epitope-specific immunogen and the purity is > 95% (by SDS-PAGE).

### Applications:

WB: 1:500~1:1000

IHC: 1:50~1:200

IF: 1:50~1:200

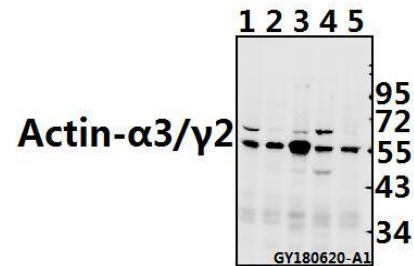
### Storage&Stability:

Store at 4 °C short term. Aliquot and store at -20 °C long term. Avoid freeze-thaw cycles.

### Specificity:

Actin- $\alpha 3/\gamma 2$  (E2) polyclonal antibody detects endogenous levels of Actin- $\alpha 3/\gamma 2$  protein.

### DATA:



Western blot (WB) analysis of Actin- $\alpha 3/\gamma 2$  (E2) pAb at 1:500 dilution

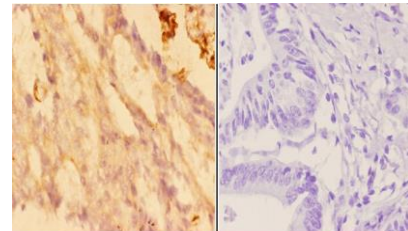
Lane1:HCT116 whole cell lysate(40ug)

Lane2:MCF-7 whole cell lysate(40ug)

Lane3:C6 whole cell lysate(40ug)

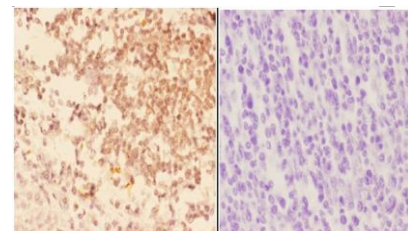
Lane4:AML-12 whole cell lysate(40ug)

Lane5:SGC7901 whole cell lysate(40ug)



BS1004  
Lot CF44121

Immunohistochemistry (IHC) analyzes of Actin- $\alpha 3/\gamma 2$  (E2) pAb in paraffin-embedded human colon carcinoma tissue at 1:50, showing cytoplasmic and nucleus staining. Negative control (the right) Using PBS instead of primary antibody, secondary antibody is Goat Anti-Rabbit IgG-biotin followed by avidin-peroxidase.



BS1004  
Lot CF44121

Immunohistochemistry (IHC) analyzes of Actin- $\alpha 3/\gamma 2$  (E2) pAb in paraffin-embedded human colon carcinoma tissue at 1:50, showing cytoplasmic and nucleus staining. Negative control (the right) Using PBS instead of primary antibody, secondary antibody is Goat Anti-Rabbit IgG-biotin followed by avidin-peroxidase.

### Bioworld Technology, Inc.

Add: 1660 South Highway 100, Suite 500 St. Louis Park, MN 55416, USA.

Email: [info@bioworld.com](mailto:info@bioworld.com)

Tel: 6123263284

Fax: 6122933841

### Bioworld technology, co. Ltd.

Add: No 9, weidi road Qixia District Nanjing, 210046, P. R. China.

Email: [info@biogot.com](mailto:info@biogot.com)

Tel: 0086-025-68037686

Fax: 0086-025-68035151



## PRODUCT DATA SHEET

Bioworld Technology, Inc.

affin-embedded human tonsil carcinoma tissue at 1:50, showing cytoplasmic and nucleus staining. Negative control (the right) Using PBS instead of primary antibody, secondary antibody is Goat Anti-Rabbit

IgG-biotin followed by avidin-peroxidase.

**Note:**

For research use only, not for use in diagnostic procedure.

---

**Bioworld Technology, Inc.**

Add: 1660 South Highway 100, Suite 500 St. Louis Park,  
MN 55416, USA.

Email: [info@bioworld.com](mailto:info@bioworld.com)

Tel: 6123263284

Fax: 6122933841

**Bioworld technology, co. Ltd.**

Add: No 9, weidi road Qixia District Nanjing, 210046,  
P. R. China.

Email: [info@biogot.com](mailto:info@biogot.com)

Tel: 0086-025-68037686

Fax: 0086-025-68035151