

GAPDH (1A6) monoclonal antibody

Catalog: BS00243-T

Host: Mouse

Reactivity: Human, Mouse, Rat

Background:

Glyceraldehyde 3 phosphate dehydrogenase (GAPDH) is well known as one of the key enzymes involved in glycolysis. As well as functioning as a glycolytic enzyme in cytoplasm, recent evidence suggests that mammalian GAPDH is also involved in a great number of intracellular processes such as membrane fusion, microtubule bundling, phosphotransferase activity, nuclear RNA export, DNA replication, and DNA repair. During the last decade a lot of data appeared concerning the role of GAPDH in different pathologies including prostate cancer progression, programmed neuronal cell death, age related neuronal diseases, such as Alzheimer's and Huntington's disease. GAPDH is expressed in all cells. It is constitutively expressed in almost all tissues at high levels.

Product:

1mg/ml in PBS with 0.02% sodium azide, 50% glycerol, pH7.2

Molecular Weight:

~ 36 kDa

Swiss-Prot:

N/A

Purification&Purity:

The antibody was affinity-purified from mouse antiserum by affinity-chromatography using epitope-specific immunogen and the purity is > 95% (by SDS-PAGE).

Applications:

ELISA: 1:50000~1:100000

WB: 1:10000

IHC:1:500~1:1000

IF:1:500~1:1000

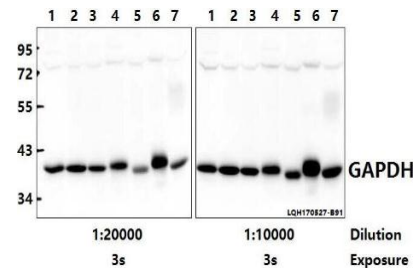
Storage&Stability:

Store at 4 °C short term. Aliquot and store at -20 °C long term. Avoid freeze-thaw cycles.

Specificity:

GAPDH (1A6) mAb detects endogenous levels of GAPDH protein.

DATA:



Western blot (WB) analysis of GAPDH (1A6) mAb at 1:20000/1:10000 dilution

Lane1:L02 whole cell lysate(40ug)

Lane2:A549 whole cell lysate(40ug)

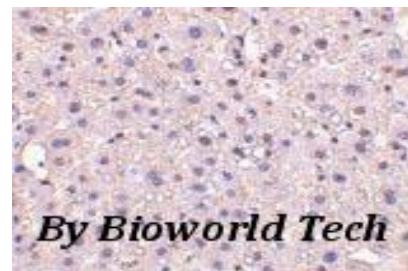
Lane3:MG63 whole cell lysate(40ug)

Lane4:PC12 whole cell lysate(40ug)

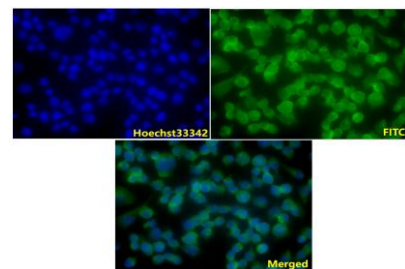
Lane5:BV2 whole cell lysate(40ug)

Lane6:The Brain tissue lysate of Rat(40ug)

Lane7:The Brain tissue lysate of Mouse(40ug)



Immunohistochemistry analyzes of GAPDH (1A6) antibody in paraffin-embedded human liver tissue



IF image of BS00243-T stained A375 cells. The cells were 4% paraform-

Bioworld Technology, Inc.

Add: 1660 South Highway 100, Suite 500 St. Louis Park, MN 55416, USA.

Email: info@bioworld.com

Tel: 6123263284

Fax: 6122933841

Bioworld technology, co. Ltd.

Add: No 9, weidi road Qixia District Nanjing, 210046, P. R. China.

Email: info@biogot.com

Tel: 0086-025-68037686

Fax: 0086-025-68035151



PRODUCT DATA SHEET

Bioworld Technology, Inc.

aldehyde fixed (20 min) and then incubated in 10% normal goat serum for 1h to permeabilise the cells and block non-specific protein-protein interactions. The cells were then incubated with the antibody GAPDH (1A6) mAb #BS00243-T(1:100) at 10 µg/ml overnight at +4 °C. The second-ary antibody (GREEN) was Goat Anti-Mouse IgG (H+L) FITC#BS50950 used at a 1/400 dilution for 1h. Hoechst33342 #BD5011 was used to stain the cell nuclei (blue).

Note:

For research use only, not for use in diagnostic procedure.

Bioworld Technology, Inc.

Add: 1660 South Highway 100, Suite 500 St. Louis Park,
MN 55416, USA.

Email: info@bioworld.com

Tel: 6123263284

Fax: 6122933841

Bioworld technology, co. Ltd.

Add: No 9, weidi road Qixia District Nanjing, 210046,
P. R. China.

Email: info@biogot.com

Tel: 0086-025-68037686

Fax: 0086-025-68035151