

PRODUCT DATA SHEET

Bioworld Technology CO., Ltd.



Prestained Protein Ladder (8~250 kDa)

Cat No.: BD0025

Size: 500ul

Introduction

The Prestained Protein Ladder is a three-color protein standard with 11 pre-stained proteins covering a wide range of molecular weights for 8 to 250 kDa. Proteins are covalently coupled with a blue chromophore except for two reference bands (one green and one red band at 8 kDa and 72 kDa respectively) when separated on SDS-PAGE (Trisglycine buffer). The Prestained Protein Ladder is designed for monitoring protein separation during SDS polyacrylamide gel electrophoresis, verification of Western transfer efficiency on membranes (PVDF, nylon or nitrocellulose) and for approximate sizing of proteins. The ladder is supplied in gel loading buffer and is ready to use. Do not heat, dilute, add reducing agent before loading.

Reagents

Approximately 0.2~0.4 mg/ml of each protein in buffer (62.5 mM Tris-H₃PO₄, pH 7.5, 2 mM EDTA, 2 % (W/V) SDS, 33 % (W/V) Glycerol, 5 mM DTT, 0.02 % (V/V) proclin300).

Application

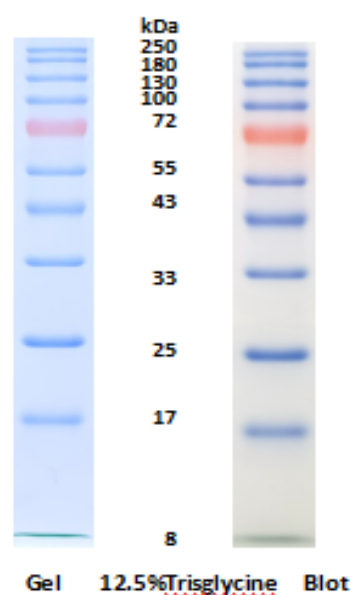
- 3 µl or 5 µl per loading for clear visualization during electrophoresis on 15-well or 10-well mini-gel, respectively.
- 2~3 µl per well for general Western transferring.
- Apply more for thicker (>1.5 mm) or larger gel.

Storage & Shelf life

Stable for up to 2 weeks at 25 °C. Stable for up to 2 months at 4 °C. For long term storage, store at -20 °C.

Guide for Molecular Weight Estimation (kDa)

Migration patterns of The Prestained Protein Ladder in different electrophoresis conditions are listed below:



Note

The apparent molecular weight of each protein (kDa) has been determined by calibration against an unstained protein ladder in each electrophoresis condition.

Research Use

For research use only, not for use in diagnostic procedures.

Bioworld Technology, Inc.

1660 South Highway 100, Suite 500 St. Louis Park, MN

55416, USA.

Email: info@bioworld.com

Tel: 6123263284

Fax: 6122933841

Bioworld technology, co, Ltd.

No 9, weidi road Qixia District Nanjing, 210046,

P, R.China.

Email: info@biogot.com

Tel: 0086-025-68037686

Fax: 0086-025-68035151