

GOLPH3 polyclonal antibody

Catalog: AP6024

Host: Rabbit

Reactivity: Human, Mouse, Rat

BackGround:

The Golgi complex plays a key role in the sorting and modification of proteins exported from the endoplasmic reticulum. GOLPH3L (golgi phosphoprotein 3-like), also known as GPP34R, is a 285 amino acid cytoplasmic protein that localizes to the Golgi apparatus. Belonging to the GOLPH3/VPS74 family, GOLPH3L may have a regulatory role in Golgi trafficking. GOLPH3L is encoded by a gene located on human chromosome 1, which spans 260 million base pairs, contains over 3,000 genes and comprises nearly 8% of the human genome. Chromosome 1 houses a large number of disease-associated genes, including those that are involved in familial adenomatous polyposis, Stickler syndrome, Parkinson's disease, Gaucher disease, schizophrenia and Usher syndrome. Aberrations in chromosome 1 are found in a variety of cancers, including head and neck cancer, malignant melanoma and multiple myeloma.

Product:

1 mg/ml in Phosphate buffered saline (PBS) with 0.05% sodium azide, approx. pH 7.3.

Molecular Weight:

~ 34 kDa

Swiss-Prot:

Q9H4A6

Purification&Purity:

The antibody was affinity-purified from rabbit antiserum by affinity-chromatography using epitope-specific immunogen and the purity is > 95% (by SDS-PAGE)

Applications:

WB: 1:500~1:1000

IHC: 1:50~1:200

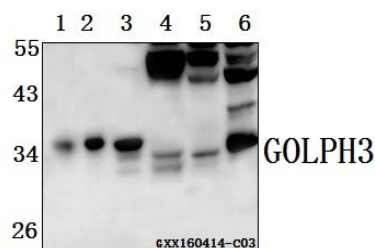
Storage&Stability:

Store at 4 °C short term. Aliquot and store at -20 °C long term. Avoid freeze-thaw cycles.

Specificity:

GOLPH3 polyclonal antibody detects endogenous levels of GOLPH3 protein.

DATA:



Western blot (WB) analysis of GOLPH3 polyclonal antibody at 1:500 dilution

Lane1: The stomach tissue lysate of Mouse(40ug)

Lane2: SGC-7901 whole cell lysate(40ug)

Lane3: HCT116 whole cell lysate(40ug)

Lane4: The kidney tissue lysate of Mouse(40ug)

Lane5: The kidney tissue lysate of Rat(40ug)

Lane6: The liver tissue lysate of Rat(40ug)

Note:

For research use only, not for use in diagnostic procedure.

Bioworld Technology, Inc.

Add: 1660 South Highway 100, Suite 500 St. Louis Park, MN 55416, USA.

Email: info@bioworld.com

Tel: 6123263284

Fax: 6122933841

Bioworld technology, co. Ltd.

Add: No 9, weidi road Qixia District Nanjing, 210046, P. R. China.

Email: info@biogol.com

Tel: 0086-025-68037686

Fax: 0086-025-68035151