

## Occludin polyclonal antibody

Catalog: AP6005

Host: Rabbit

Reactivity: Human, Mouse, Rat

**BackGround:**

May play a role in the formation and regulation of the tight junction (TJ) paracellular permeability barrier. It is able to induce adhesion when expressed in cells lacking tight junctions.

**Product:**

Rabbit IgG, 1mg/ml in PBS with 0.02% sodium azide, 50% glycerol, pH7.2

**Molecular Weight:**

~ 60 kDa

**Swiss-Prot:**

Q16625

**Purification&Purity:**

The antibody was affinity-purified from rabbit antiserum by affinity-chromatography using epitope-specific immunogen and the purity is > 95% (by SDS-PAGE).

**Applications:**

WB, 1:500 - 1:1000 | IF/ICC, 1:50 - 1:200

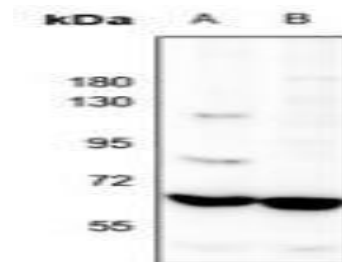
**Storage&Stability:**

Store at 4 °C short term. Aliquot and store at -20 °C long term. Avoid freeze-thaw cycles.

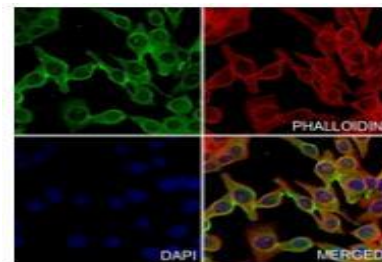
**Specificity:**

Occludin polyclonal antibody detects endogenous levels

of Occludin protein.

**DATA:**

Western blot analysis of Occludin expression in mouse kidney (A), rat kidney (B) whole cell lysates.



Immunofluorescent analysis of Occludin staining in MCF7 cells.

**Note:**

For research use only, not for use in diagnostic procedure.

**Bioworld Technology, Inc.**

Add: 1660 South Highway 100, Suite 500 St. Louis Park, MN 55416, USA.

Email: [info@bioworld.com](mailto:info@bioworld.com)

Tel: 6123263284

Fax: 6122933841

**Bioworld technology, co. Ltd.**

Add: No 9, weidi road Qixia District Nanjing, 210046, P. R. China.

Email: [info@biogot.com](mailto:info@biogot.com)

Tel: 0086-025-68037686

Fax: 0086-025-68035151