

mcherry-Tag mouse monoclonal antibody-HRP

Catalog: AP1025MH

Host: Mouse

Reactivity: Transfected

BackGround:

MCherry is a fluorophore (a fluorescent molecule) used in biotechnology as a tracer to follow the flow of fluids, as a marker when tagged to molecules and cells components. mCherry is a monomeric fluorescent construct which absorbs at 587 nm and emits at 610 nm. It is resistant to photobleaching and is stable. It matures quickly, with a $t_{0.5}$ of 15 minutes, allowing it to be visualised soon after translation.

Product:

Mouse IgG1, 0.75mg/ml in PBS with 0.02% sodium azide, 50% glycerol, pH7.2

Molecular Weight:

N/A

Swiss-Prot:

N/A

Purification&Purity:

The antibody was affinity-purified from cell culture supernatant by protein A+G and the purity is > 95% (by SDS-PAGE).

Applications:

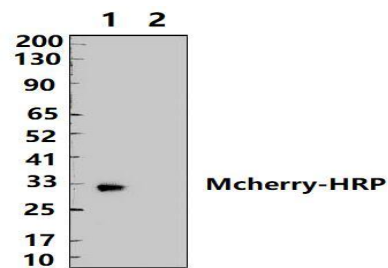
WB: 1:2000~1:10000

Storage&Stability:

Store at 4°C short term. Aliquot and store at -20°C long term. Avoid freeze-thaw cycles.

Specificity:

mcherry-Tag mAb-HRP detects over-expressed or recombinant proteins containing the mcherry epitope tag.

DATA:

Western blot (WB) analysis of mcherry-tag mAb-HRP at 1:5000 dilution

Lane1:HEK293F whole cell lysate,transfected (mcherry)

Lane2:HEK293F whole cell lysate

Note:

For research use only, not for use in diagnostic procedure.

Bioworld Technology, Inc.

Add: 1660 South Highway 100, Suite 500 St. Louis Park,
MN 55416,USA.

Email: info@bioworld.com

Tel: 6123263284

Fax: 6122933841

Bioworld technology, co. Ltd.

Add: No 9, weidi road Qixia District Nanjing, 210046,
P. R. China.

Email: info@biogot.com

Tel: 0086-025-68037686

Fax: 0086-025-68035151