

AChE polyclonal antibody

Catalog: AP0691

Host: Rabbit

Reactivity: Human, Mouse, Rat

Background:

Acetylcholinesterase (AChE) hydrolyzes acetylcholine at synaptic junctions. Alternative mRNA splicing gives rise to three forms of AChE. The T form, also known as the asymmetric form, is soluble and is present in synapses. The H form is also known as the globular form and is present on the outer surfaces of cell membranes. The R form is not known to be a functional species. AChE globular form subunits are GPI-anchored to cell membranes and asymmetric subunits are anchored to basal lamina components by a collagen tail. The catalytic subunits of AChE are oligomers composed of disulfide-linked homodimers. The loss of AChE from cholinergic and noncholinergic neurons in the brain is seen in patients with Alzheimer's disease. However, AChE activity is increased around amyloid plaques, which may be due to a disturbance in calcium homeostasis involving the opening of L-type voltage-dependent calcium channels.

Product:

Rabbit IgG, 1mg/ml in PBS with 0.02% sodium azide, 50% glycerol, pH7.2

Molecular Weight:

~ 70-85 kDa

Swiss-Prot:

P22303

Purification&Purity:

The antibody was affinity-purified from rabbit antiserum by affinity-chromatography using epitope-specific immunogen and the purity is > 117% (by SDS-PAGE).

Applications:

WB: 1:500~1:1000

IHC: 1:50~1:200

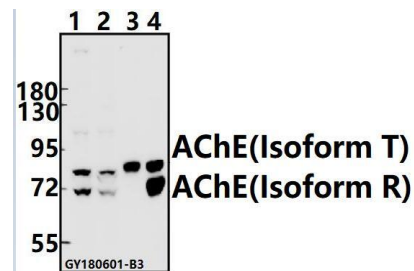
Storage&Stability:

Store at 4 °C short term. Aliquot and store at -20 °C long term. Avoid freeze-thaw cycles.

Specificity:

AChE polyclonal antibody detects endogenous levels of AChE protein.

DATA:



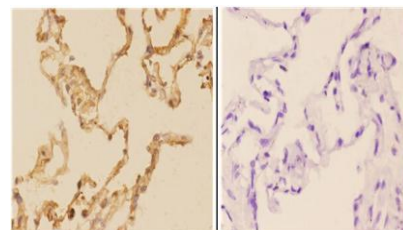
Western blot (WB) analysis of AChE pAb at 1:500 dilution

Lane1:K562 whole cell lysate(40ug)

Lane2:SGC7901 whole cell lysate(40ug)

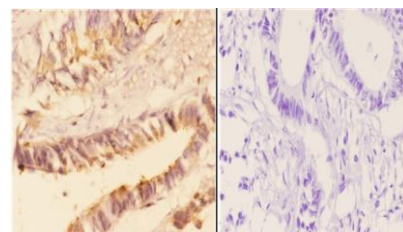
Lane3:The Blood tissue lysate of Mouse(40ug)

Lane4:The Blood tissue lysate of Rat(40ug)



AP0691
Lot:AA65121

Immunohistochemistry (IHC) analyzes of AChE pAb in paraffin-embedded human lung carcinoma tissue at 1:50, showing membrane and nuclear staining. Negative control (the right) using PBS instead of primary antibody, secondary antibody is Goat Anti-Rabbit IgG-biotin followed by avidin-peroxidase.



AP0691
Lot:AA65121

Immunohistochemistry (IHC) analyzes of AChE pAb in paraffin-embedded human rectum carcinoma tissue at 1:50, showing mem-

Bioworld Technology, Inc.

Add: 1660 South Highway 100, Suite 500 St. Louis Park, MN 55416, USA.

Email: info@bioworld.com

Tel: 6123263284

Fax: 6122933841

Bioworld technology, co. Ltd.

Add: No 9, weidi road Qixia District Nanjing, 210046, P. R. China.

Email: info@biogot.com

Tel: 0086-025-68037686

Fax: 0086-025-68035151



PRODUCT DATA SHEET

Bioworld Technology, Inc.

brnae and nuclear staining. Negative control (the right) Using PBS instead of primary antibody, secondary antibody is Goat Anti-Rabbit IgG-biotin followed by avidin-peroxidase.

Note:

For research use only, not for use in diagnostic procedure.

Bioworld Technology, Inc.

Add: 1660 South Highway 100, Suite 500 St. Louis Park,
MN 55416, USA.

Email: info@bioworld.com

Tel: 6123263284

Fax: 6122933841

Bioworld technology, co. Ltd.

Add: No 9, weidi road Qixia District Nanjing, 210046,
P. R. China.

Email: info@biogot.com

Tel: 0086-025-68037686

Fax: 0086-025-68035151