

## β -Actin (I102) polyclonal antibody

Catalog: AP0060

Host: Rabbit

Reactivity:

Hu-  
man, Mouse, Rat, zebrafish, Odont  
obutis obscurus

### BackGround:

All eukaryotic cells express actin, which often constitutes as much as 50% of total cellular protein. Actin filaments can form both stable and labile structures and are crucial components of microvilli and the contractile apparatus of muscle cells. While lower eukaryotes, such as yeast, have only one actin gene, higher eukaryotes have several isoforms encoded by a family of genes. At least six types of actin are present in mammalian tissues and fall into three classes. β-actin expression is limited to various types of muscle, whereas α- and γ-actin are the principle constituents of filaments in other tissues. Members of the small GTPase family regulate the organization of the actin cytoskeleton. Rho controls the assembly of actin stress fibers and focal adhesion, Rac regulates actin filament accumulation at the plasma membrane and Cdc42 stimulates formation of filopodia.

### Product:

Rabbit IgG, 1mg/ml in PBS with 0.02% sodium azide, 50% glycerol, pH7.2

### Molecular Weight:

~ 42 kDa

### Swiss-Prot:

N/A

### Purification&Purity:

The antibody was affinity-purified from rabbit antiserum by affinity-chromatography using epitope-specific immunogen and the purity is > 95% (by SDS-PAGE).

### Applications:

WB: 1:5000~1:20000

IP: 1:100~500

IF: 1:500~1000

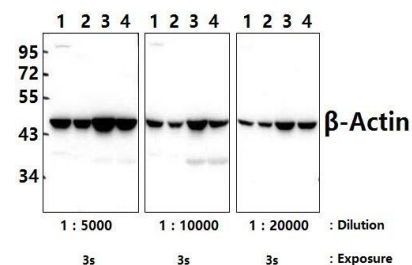
### Storage&Stability:

Store at 4 °C short term. Aliquot and store at -20 °C long term. Avoid freeze-thaw cycles.

### Specificity:

β-actin (I102) polyclonal antibody detects endogenous levels of β-actin protein.

### DATA:



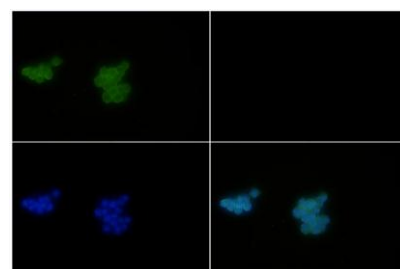
Western blot (WB) analysis of β-Actin (I102) pAb at 1:5000/1:10000/1:20000 dilution

Lane1:CT-26 whole cell lysate(40ug)

Lane2:PC12 whole cell lysate(40ug)

Lane3:HEK293T whole cell lysate(40ug)

Lane4:A549 whole cell lysate(40ug)



Immunofluorescence analysis of RAW264.7 cells using β-actin (I102) pAb at dilution of 1:500 (40x lens).

Immunoprecipitation of MCF-7 cell lysates using β-actin (I102) pAb (Sepharose Bead Conjugate)#BD0048 (lane 2 and lane 3) and Nonspecific IgG Control (Sepharose Bead Conjugate)#BD0048 (lane 4 and lane 5). Lane 1 is 30% input. The western blot was probed using β-Actin pAb.

### Note:

### Bioworld Technology, Inc.

Add: 1660 South Highway 100, Suite 500 St. Louis Park, MN 55416, USA.

Email: [info@bioworld.com](mailto:info@bioworld.com)

Tel: 6123263284

Fax: 6122933841

### Bioworld technology, co. Ltd.

Add: No 9, weidi road Qixia District Nanjing, 210046, P. R. China.

Email: [info@biogot.com](mailto:info@biogot.com)

Tel: 0086-025-68037686

Fax: 0086-025-68035151



## PRODUCT DATA SHEET

Bioworld Biotech Co., Ltd

---

For research use only, not for use in diagnostic procedure.

---

### **Bioworld Technology, Inc.**

**Add:** 1660 South Highway 100, Suite 500 St. Louis Park,  
MN 55416, USA.

**Email:** [info@bioworld.com](mailto:info@bioworld.com)

**Tel:** 6123263284

**Fax:** 6122933841

### **Bioworld technology, co. Ltd.**

**Add:** No 9, weidi road Qixia District Nanjing, 210046,  
P. R. China.

**Email:** [info@biogot.com](mailto:info@biogot.com)

**Tel:** 0086-025-68037686

**Fax:** 0086-025-68035151